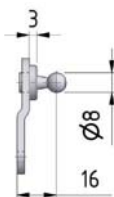
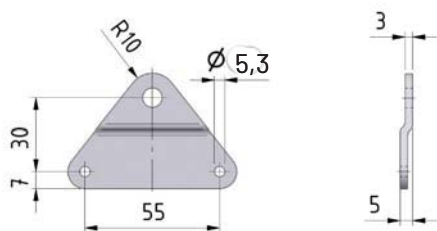
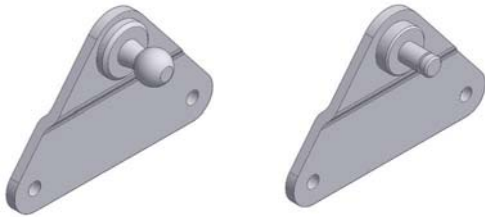


Seitenbeschlag

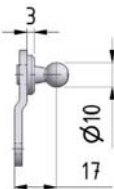
Material Stahl blau verzinkt

Optional Edelstahl W.1.4404/AISI 316 (V4)

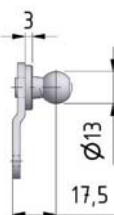
BA 01 / BA 01 V4



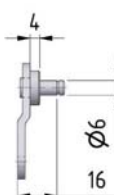
BA 01 K08
 BA 01 K08 V4
 Festigkeit max. 500 N



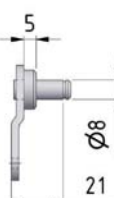
BA 01 K10
 BA 01 K10 V4
 Festigkeit max. 800 N



BA 01 K13
 BA 01 K13 V4
 Festigkeit max. 1200 N

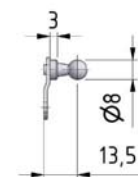
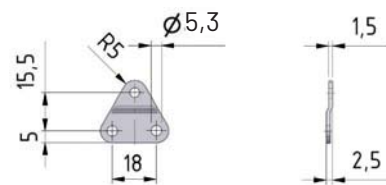


BA 01 Z06
 BA 01 Z06 V4
 Festigkeit max. 500 N

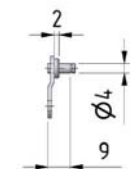


BA 01 Z08
 BA 01 Z08 V4
 Festigkeit max. 1200 N

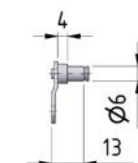
BB 01 / BB 01 V4



BB 01 K08
 BB 01 K08 V4
 Festigkeit max. 180 N



BB 01 Z04
 BB 01 Z04 V4
 Festigkeit max. 180 N



BB 01 Z06
 BB 01 Z06 V4
 Festigkeit max. 180 N