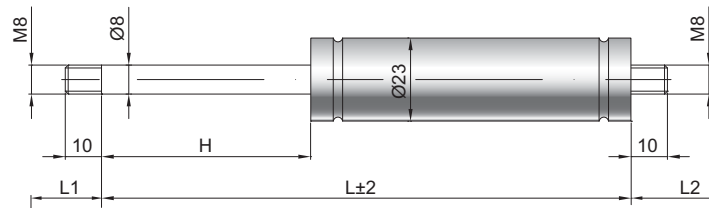


# Ölbremse D 08-23

<b>Dämpfkraft</b>	50 - 800 Newton
<b>Kolbenstange</b>	Ø 8 mm, Stahl hartverchromt
<b>Druckrohr</b>	Ø 23 mm, Stahl schwarz lackiert
<b>Anschlüsse</b>	Stahl blau verzinkt

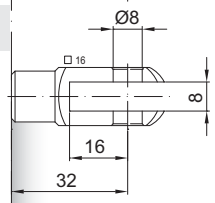
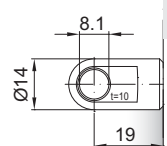
GZ 10

GZ 10



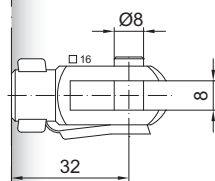
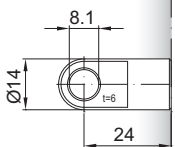
AU 19

GA 32



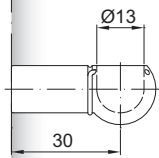
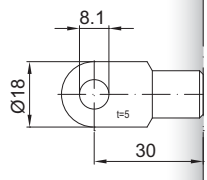
AS 24

GG 32



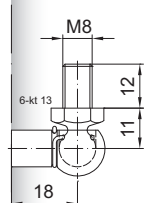
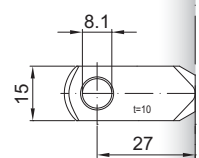
AS 30

PF 30



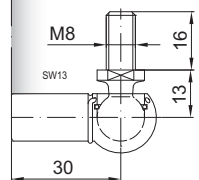
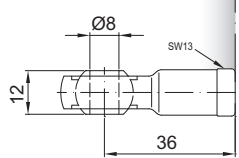
AR 27

WG 18



AG 36

WG 30



## Details

**Standardhöhe H (mm)**  
 40, 50, 60, 70, 80, 100, 110, 120,  
 140, 150, 160, 180, 200, 220, 250,  
 300, 360, 410, 510

**Standardlänge GL**  
 $L = 2 \times H + 40$   
 $GL = L + L1 + L2$

**Extras**  
 6 - Schutzrohr

**Dämpfung**  
 1 = Zugdämpfer  
 2 = Druckdämpfer  
 3 = beidseitig wirkender Dämpfer

Weitere **Anschlüsse** finden Sie hier [▶](#)  
 Passende **Beschläge** finden Sie hier [▶](#)

bis max. 800 N