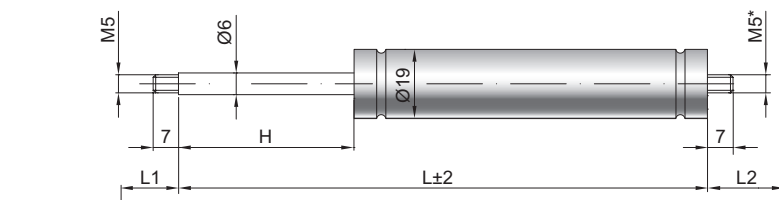


Gas spring G 06-19 V2

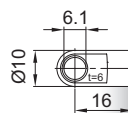
Extension force F1	40 - 400 Newton
Progression	17 %
Piston rod	Ø 6 mm, W. 1.4305 / AISI 303
Cylinder	Ø 19 mm, W. 1.4301 / AISI 304
Endfittings	W. 1.4305 / AISI 303

GZ 10



GZ 10

AU 16



Details

Standard strokes H (mm)
40, 50, 60, 80, 100, 120, 150, 200

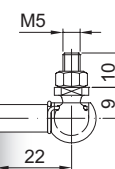
Standard length GL
 $L = 2 \times H + 55$
 $GL = L + L1 + L2$

Standard including
Valve in base plate

Extras
2 - Radial valve
6 - Protection tube
7 - Floating piston

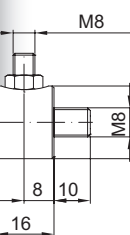
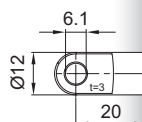
*Threaded end optional M5 or M8

More **endfittings** can be found here [▶](#)
Matching **brackets** can be found here [▶](#)



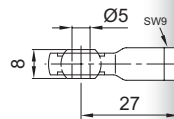
WG 22

AS 20

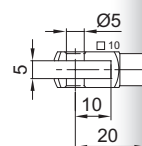


QV GZ

AG 27



GA 20



WX 22

