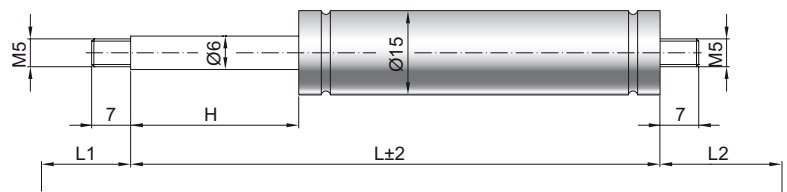


# Gas spring G 06-15 V2

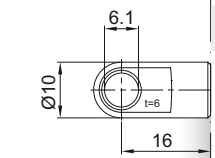
<b>Extension force F1</b>	40 - 400 Newton
<b>Progression</b>	25 %
<b>Piston rod</b>	Ø 6 mm, W. 1.4305 / AISI 303
<b>Cylinder</b>	Ø 15 mm, W. 1.4301 / AISI 304
<b>Threads</b>	W. 1.4305 / AISI 303

GZ 07

GZ 07



AU 16



**Details**

**Standard strokes H (mm)**  
40, 50, 60, 80, 100, 120, 150, 160, 200

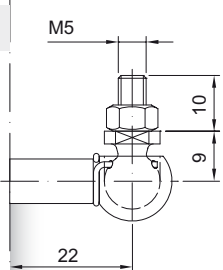
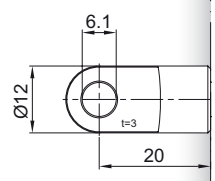
**Standard length GL**  
 $L = 2 \times H + 55$   
 $GL = L + L1 + L2$

**Standard including**  
Valve in base plate

- Extras**
- 4 - Grease chamber
  - 6 - Protection tube
  - 7 - Floating piston
  - B3 - Sealing system
  - NT - Low-temperature design
  - HT - High-temperature design
  - RK - Friction element

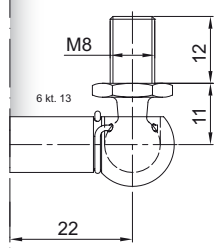
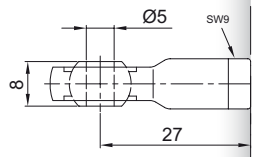
More **threads** can be found here [▶](#)  
Matching **brackets** can be found here [▶](#)

AS 20



WG 22

AG 27



WX 22

GA 20

