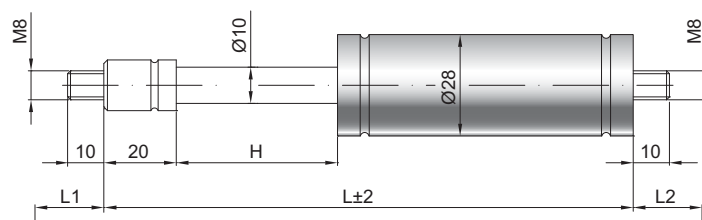


## Gaszugfeder Z 10-28

<b>Zugkraft F1</b>	150 - 1200 Newton
<b>Progression</b>	20 %
<b>Kolbenstange</b>	Ø 10 mm, Stahl hartverchromt
<b>Druckrohr</b>	Ø 28 mm, Stahl schwarz lackiert
<b>Anschlüsse</b>	Stahl blau verzinkt

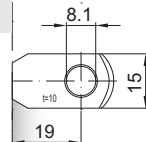
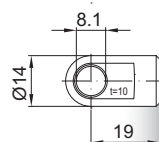
GZ 10

GZ 10



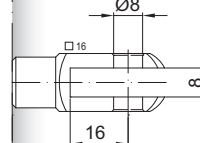
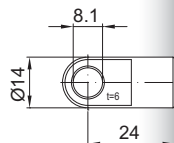
AU 19

AR 19



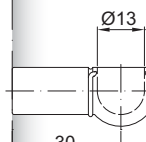
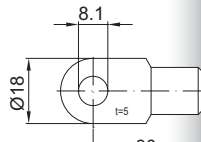
AS 24

GA 32



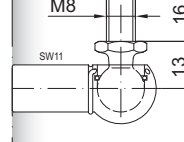
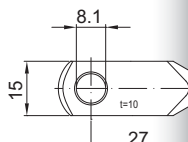
AS 30

PF 30



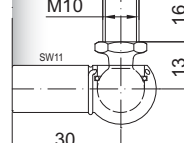
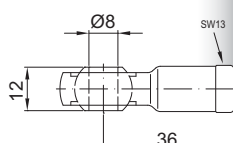
AR 27

WG 30



AG 36

WX 30



### Details

#### Standardhübe H (mm)

20, 50, 60, 70, 80, 100, 110, 120, 130,  
150, 160, 180, 200, 210, 220, 250, 260, 300,  
350, 360, 400, 450, 500, 600

#### Standardlänge GL

$L = 2 \times H + 100$   
 $GL = L + L1 + L2$

#### Standardlieferumfang

Ventil an der Kolbenstange

#### Extras

4 - Fettkammer  
6 - Schutzrohr  
B3 - Dichtsystem  
NT - Niedertemperaturlösung  
HT - Hochtemperaturlösung

Gewindezapfen auch mit M10 lieferbar

Weitere **Anschlüsse** finden Sie hier [►](#)

Passende **Beschläge** finden Sie hier [►](#)