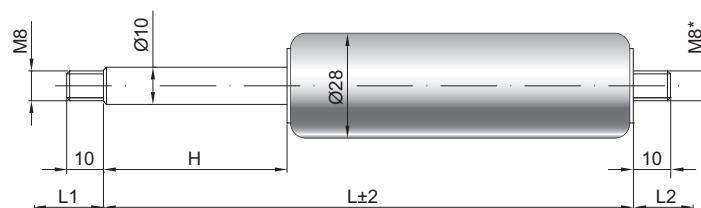


## Gasdruckfeder G 10-28

<b>Ausschubkraft F1</b>	100 - 1200 Newton
<b>Progression</b>	20 %
<b>Kolbenstange</b>	Ø 10 mm, Stahl hartverchromt
<b>Druckrohr</b>	Ø 28 mm, Stahl schwarz lackiert
<b>Anschlüsse</b>	Stahl blau verzinkt

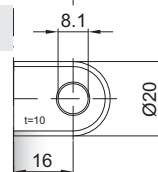
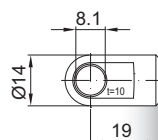
GZ 10

GZ 10



AU 19

AB 16



### Details

#### Standardhöhe H (mm)

40, 50, 60, 80, 85, 100, 120, 140, 150,  
160, 180, 200, 220, 250, 270, 300, 325,  
350, 400, 450, 500, 600, 700

#### Standardlänge GL

$L = 2 \times H + 70$   
 $GL = L + L1 + L2$

#### Extras

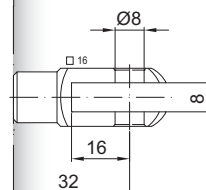
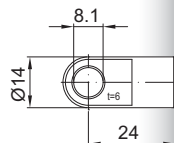
- 1 - Abstreifer
- 2 - Querventil
- 4 - Fettkammer
- 5 - Ventil
- 6 - Schutzrohr
- 7 - schwimmender Kolben
- 8 - Einsichtsicherung
- B3 - Dichtsystem
- NT - Niedertemperatursausführung
- HT - Hochtemperatursausführung
- RK - Reibelement

\*Gewindebodenstück wahlweise mit  
M8 oder M10

Weitere **Anschlüsse** finden Sie hier ►  
Passende **Beschläge** finden Sie hier ►

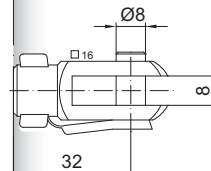
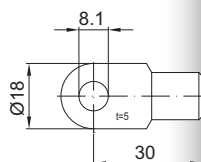
AS 24

GA 32



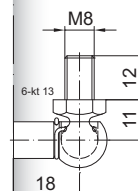
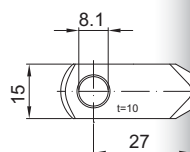
AS 30

GG 32



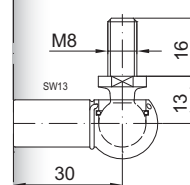
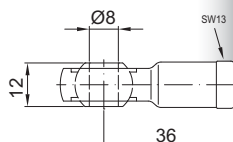
AR 27

WG 18

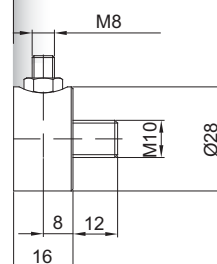


AG 36

WG 30



QV GZ



Nur am Zylinder möglich

bis max. 800 N