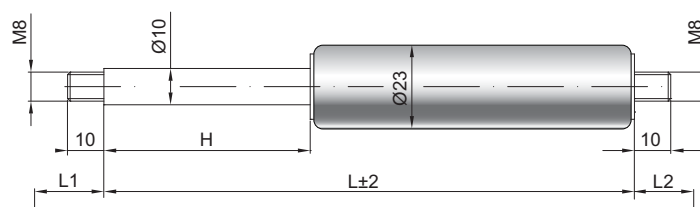


Gasdruckfeder G 10-23

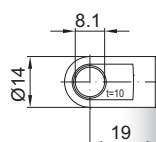
Ausschubkraft F1	100 - 1200 Newton
Progression	30 %
Kolbenstange	Ø 10 mm, Stahl hartverchromt
Druckrohr	Ø 23 mm, Stahl schwarz lackiert
Anschlüsse	Stahl blau verzinkt

GZ 10



GZ 10

AU 19



Details

Standardhöhe H (mm)

40, 50, 60, 80, 85, 100, 120, 140, 150,
160, 180, 200, 220, 250, 270, 300, 325,
350, 400, 450, 500, 600, 700

Standardlänge GL

$$L = 2 \times H + 70$$

$$GL = L + L1 + L2$$

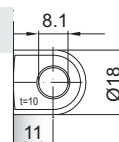
Extras

- 1 - Abstreifer
- 2 - Querventil
- 4 - Fettkammer
- 5 - Ventil
- 6 - Schutzrohr
- 7 - schwimmender Kolben
- 8 - Einsichtsicherung
- B3 - Dichtsystem
- NT - Niedertemperatursausführung
- HT - Hochtemperatursausführung
- RK - Reibelement

Weitere **Anschlüsse** finden Sie hier ►

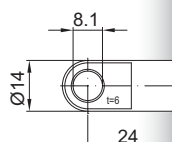
Passende **Beschläge** finden Sie hier ►

AB 11

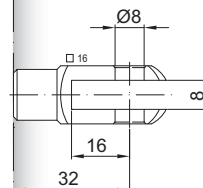


Nur am Zylinder möglich

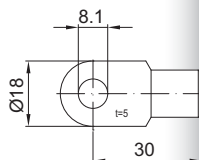
AS 24



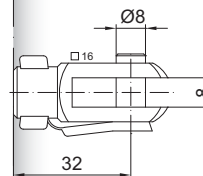
GA 32



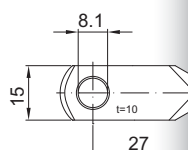
AS 30



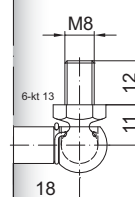
GG 32



AR 27

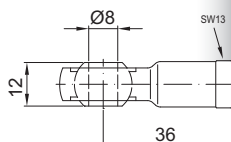


WG 18

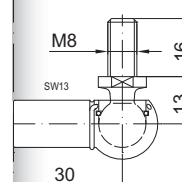


bis max. 800 N

AG 36



WG 30



QV GZ

