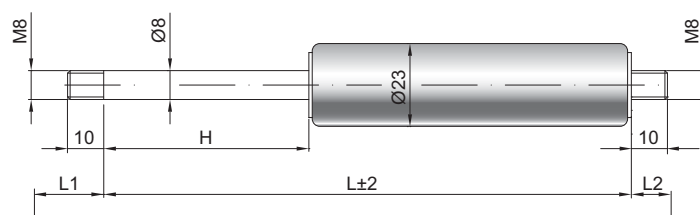


Gasdruckfeder G 08-23

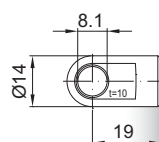
Ausschubkraft F1	50 - 700 Newton
Progression	18 %
Kolbenstange	Ø 8 mm, Stahl hartverchromt
Druckrohr	Ø 23 mm, Stahl schwarz lackiert
Anschlüsse	Stahl blau verzinkt

GZ 10



GZ 10

AU 19



Details

Standardhöhe H (mm)

40, 50, 60, 70, 80, 100, 110, 120,
140, 150, 160, 180, 200, 220, 250,
300, 350, 400, 500

Standardlänge GL

$L = 2 \times H + 70$
 $GL = L + L1 + L2$

Extras

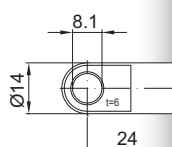
- 1 - Abstreifer
- 2 - Querventil
- 4 - Fettkammer
- 5 - Ventil
- 6 - Schutzrohr
- 7 - schwimmender Kolben
- B3 - Dichtsystem
- NT - Niedertemperatursausführung
- HT - Hochtemperatursausführung
- RK - Reibelement

Weitere **Anschlüsse** finden Sie hier ►
Passende **Beschläge** finden Sie hier ►

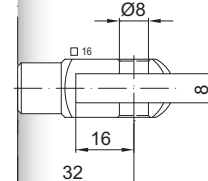
AB 11

Nur am Zylinder möglich

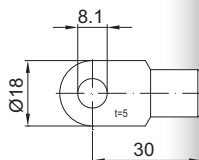
AS 24



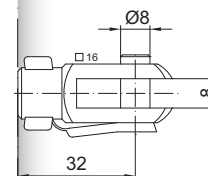
GA 32



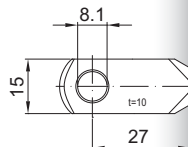
AS 30



GG 32

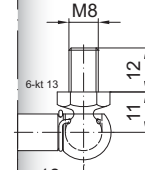


AR 27

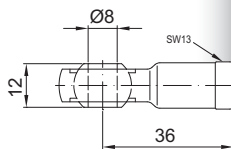


WG 18

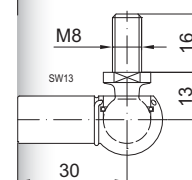
bis max. 800 N



AG 36



WG 30



QV GZ

