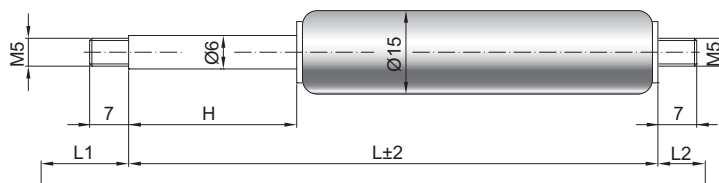


Gasdruckfeder G 06-15

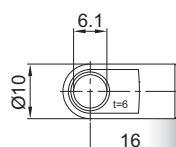
Ausschubkraft F1	40 - 400 Newton
Progression	22 %
Kolbenstange	Ø 6 mm, Stahl hartverchromt
Druckrohr	Ø 15,6 mm, Stahl schwarz lackiert
Anschlüsse	Stahl blau verzinkt

GZ 07



GZ 07

AU 16



Details

Standardhübe H (mm)

20, 30, 40, 50, 60, 70, 80, 100, 110, 120, 140, 150, 160, 170, 180, 190, 200, 220, 250, 300

Standardlänge GL

$L = 2 \times H + 55$
 $GL = L + L1 + L2$

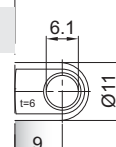
Extras

4 - Fettkammer
 5 - Ventil
 6 - Schutzrohr
 7 - schwimmender Kolben
 B3 - Dichtsystem
 NT - Niedertemperatursausführung
 HT - Hochtemperatursausführung
 RK - Reibelement

Weitere **Anschlüsse** finden Sie hier ►

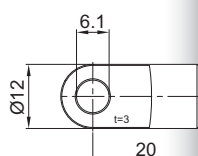
Passende **Beschläge** finden Sie hier ►

AB 09

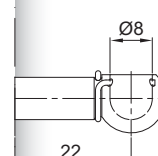


Nur am Zylinder möglich

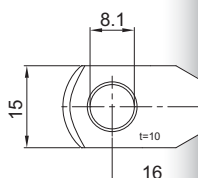
AS 20



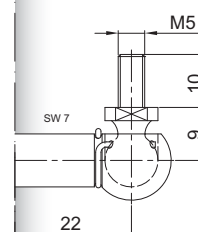
PF 22



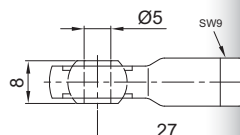
AR 16



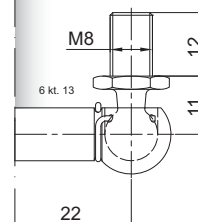
WG 22



AG 27



WX 22



GA 20

